

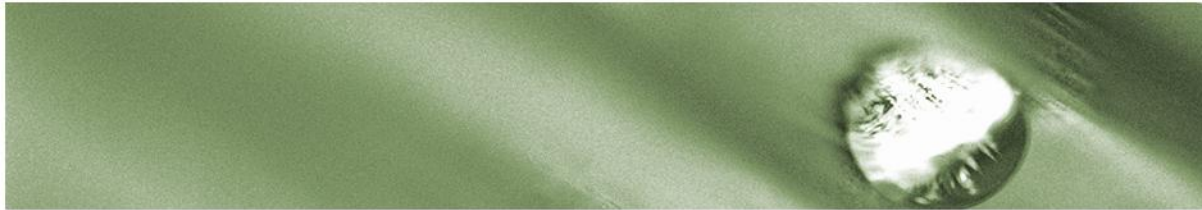


P3 – Mainframe Integration and Modernization for CICS and IMS-DC using Web Services

Including LIVE demonstration using Ivory and a real mainframe

Axel Rittershaus, Machold Systemhaus 21, Stuttgart

IBM System Z Technical Conference – 16. – 20. April 2007



Ivory philosophy

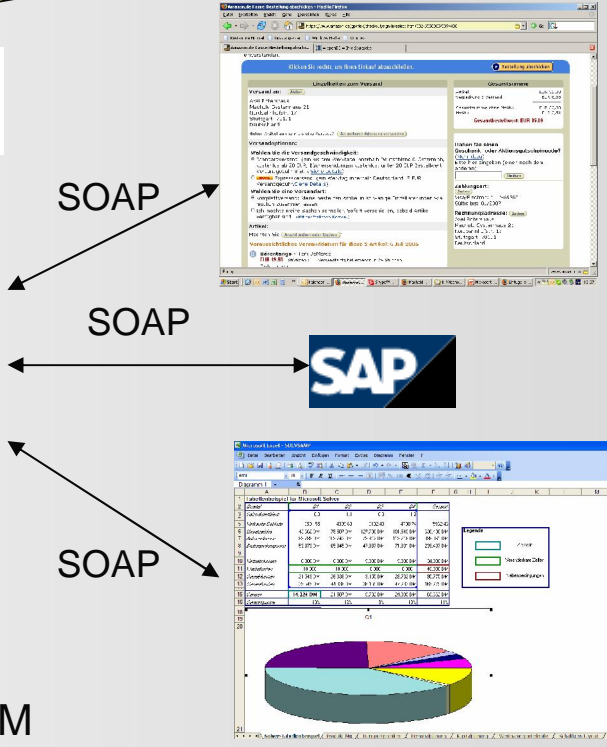
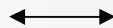
No Integration
Middleware required



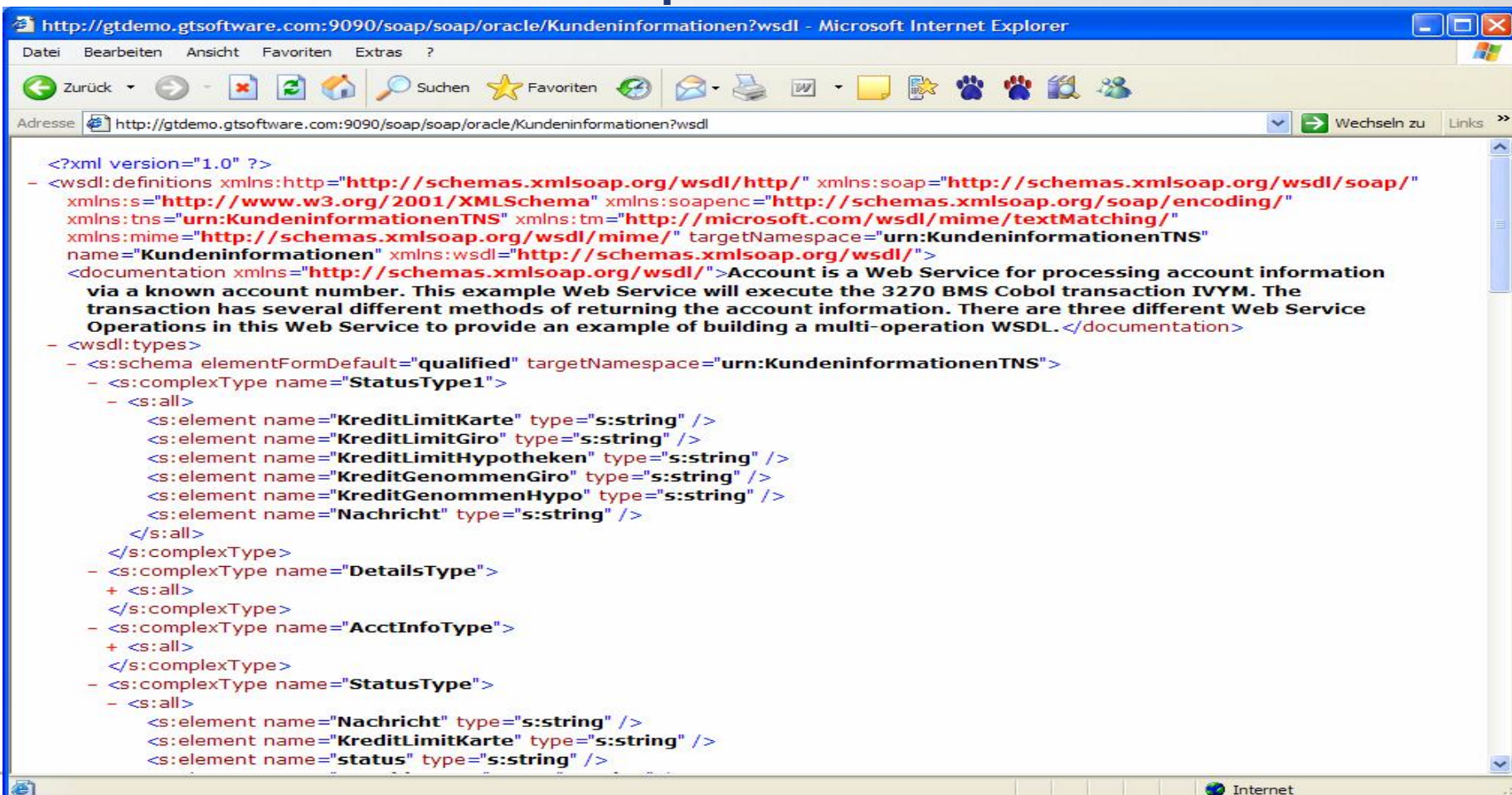
Development studio
auf XP, W2000, ...



Server component for IBM
MVS, z/OS, VSE, OS/390



Web Service – WSDL example



http://gtdemo.gtsoftware.com:9090/soap/soap/oracle/Kundeninformationen?wsdl - Microsoft Internet Explorer

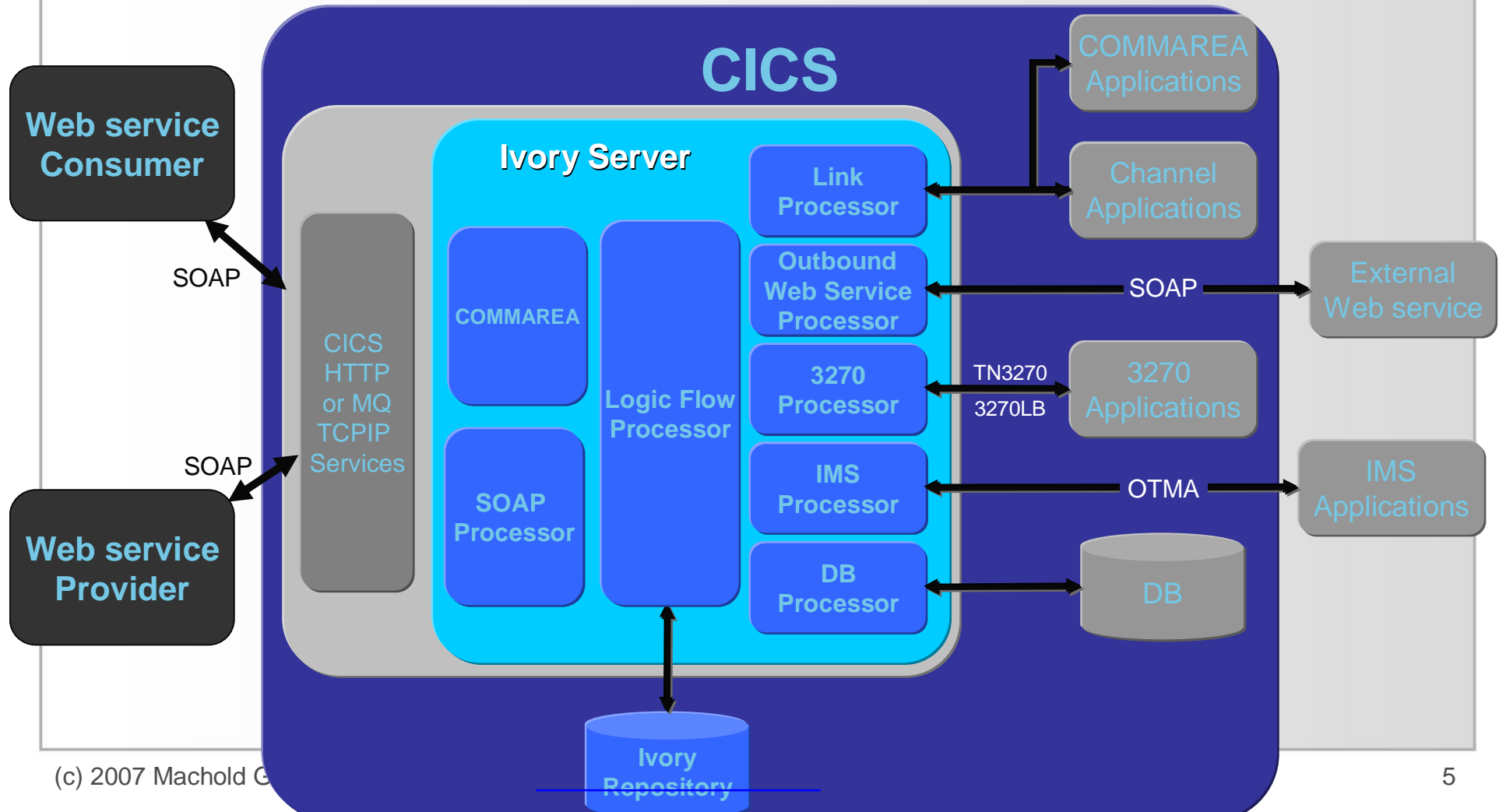
Adresse <http://gtdemo.gtsoftware.com:9090/soap/soap/oracle/Kundeninformationen?wsdl>

```

<?xml version="1.0" ?>
- <wsdl:definitions xmlns:http="http://schemas.xmlsoap.org/wsdl/http/" xmlns:soap="http://schemas.xmlsoap.org/wsdl/soap/"
  xmlns:s="http://www.w3.org/2001/XMLSchema" xmlns:soapenc="http://schemas.xmlsoap.org/soap/encoding/"
  xmlns:tns="urn:KundeninformationenTNS" xmlns:tm="http://microsoft.com/wsdl/mime/textMatching/"
  xmlns:mime="http://schemas.xmlsoap.org/wsdl/mime/" targetNamespace="urn:KundeninformationenTNS"
  name="Kundeninformationen" xmlns:wsdl="http://schemas.xmlsoap.org/wsdl/">
  <documentation xmlns="http://schemas.xmlsoap.org/wsdl/">Account is a Web Service for processing account information
    via a known account number. This example Web Service will execute the 3270 BMS Cobol transaction IVYM. The
    transaction has several different methods of returning the account information. There are three different Web Service
    Operations in this Web Service to provide an example of building a multi-operation WSDL.</documentation>
- <wsdl:types>
  - <s:schema elementFormDefault="qualified" targetNamespace="urn:KundeninformationenTNS">
    - <s:complexType name="StatusType1">
      - <s:all>
        <s:element name="KreditLimitKarte" type="s:string" />
        <s:element name="KreditLimitGiro" type="s:string" />
        <s:element name="KreditLimitHypotheiken" type="s:string" />
        <s:element name="KreditGenommenGiro" type="s:string" />
        <s:element name="KreditGenommenHypo" type="s:string" />
        <s:element name="Nachricht" type="s:string" />
      </s:all>
    </s:complexType>
  - <s:complexType name="DetailsType">
    + <s:all>
    </s:complexType>
  - <s:complexType name="AcctInfoType">
    + <s:all>
    </s:complexType>
  - <s:complexType name="StatusType">
    - <s:all>
      <s:element name="Nachricht" type="s:string" />
      <s:element name="KreditLimitKarte" type="s:string" />
      <s:element name="status" type="s:string" />
    </s:all>
  </s:schema>

```

CICS architecture

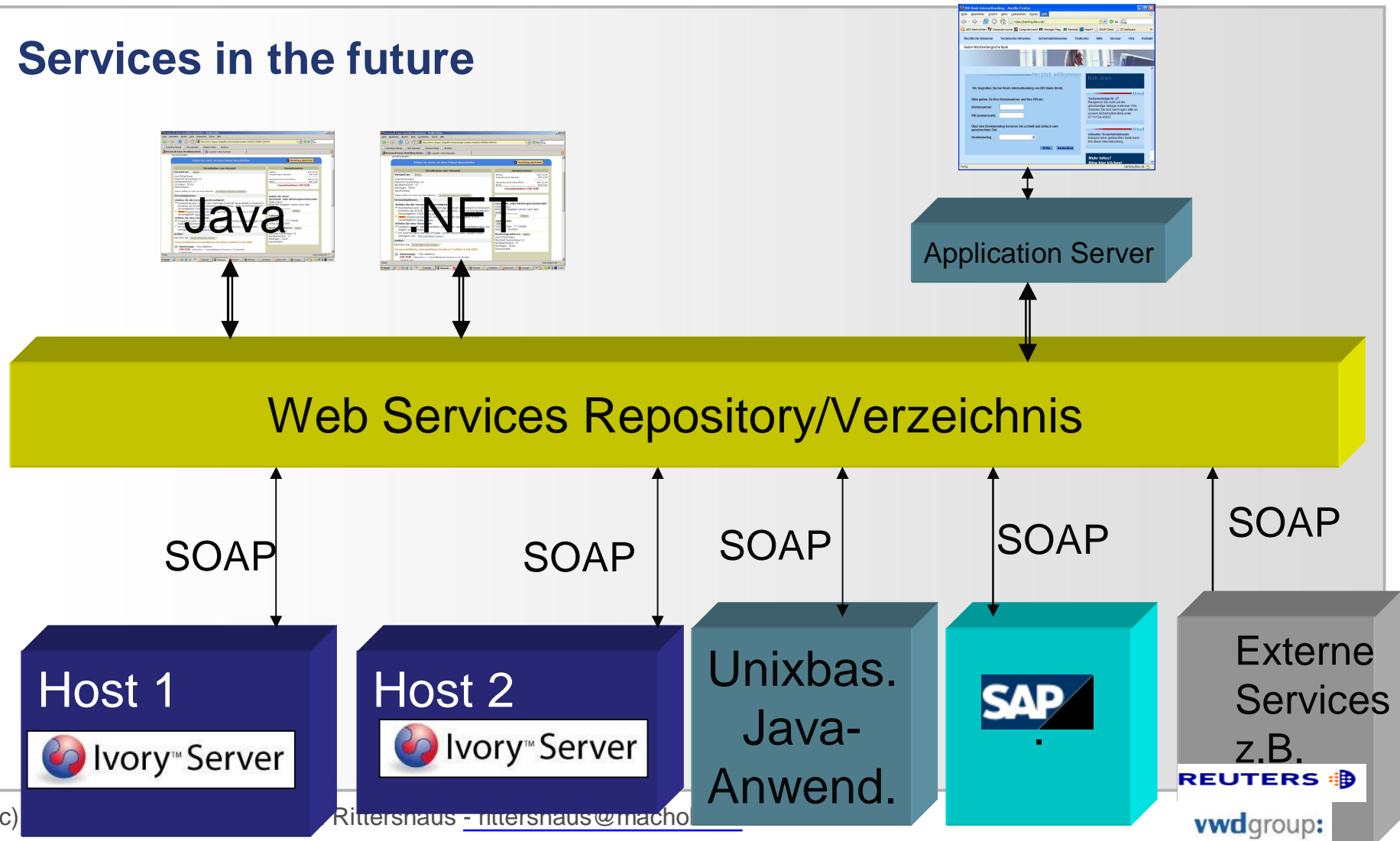


Ivory

- Delivers existing mainframe functionality (programs, transactions, data) to new technology worlds like .NET, J2EE, ...
- NO changes in existing (mainframe-) applications required
- Graphical IDE (Ivory Studio) and mainframe based server component
- Create one new function as a Web service using multiple mainframe transactions without coding
- Import wizard for Copybooks, Includes, BMS maps, ...

- NO additional hardware or software required
- NO changes in existing applications
- NO coding
- NO need to learn Java, .NET, XML, WSDL -> every mainframe programmer (!) can use it

Services in the future





Powerpoint is the best plattform for each kind of applications - but does it really work in the real world ???

LIVE DEMO

Using Ivory and a mainframe based at GT
Software, Atlanta, GA, USA

At a glance

- ➔ High productivity - no coding
- ➔ Mainframe extends his functionality - no need for additional middleware
- ➔ Reuse existing business logic in an intelligent way
- ➔ Existing - and proven - applications will not be changed
- ➔ CICS and IMS 100% supported
- ➔ No training required, mainframe developers will use it within 2 days

- ➔ fast time to market
- ➔ efficient
- ➔ cost effective
- ➔ secure

Ivory supports and stabilises the useage of mainframes in the future and SOA-enables him

Kontakt

EDV-Beratung Machold GmbH
Systemhaus 21
Nordbahnhofstr. 17
70191 Stuttgart
Germany
www.machold.de
www.rapid-soa.de

Axel Rittershaus
Tel.: +49 (711) 2 57 72-11
Fax: +49 (711) 2 57 72-22
Mobil: +49 (160) 93 860 118

E-mail: axel.rittershaus@machold.de